

Adjustable Easy-Fix LT striker, 1,2 mm thickness for Polaris 2XT, Revolution XT and Vitra - for rebated doors



Description

Adjustable steel striker and cover-tray for latch hole, with reduced depth and front installation with clip for an easy extraction without the plate removal.

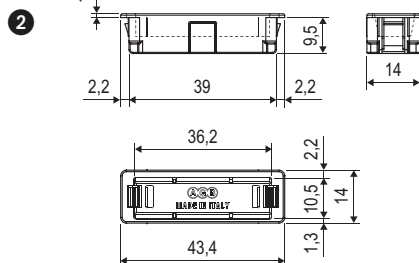
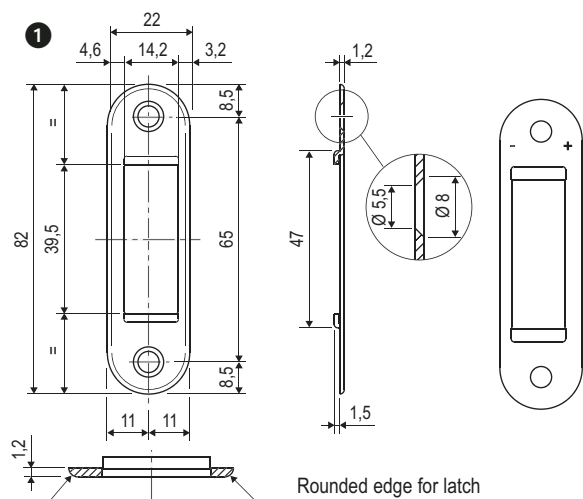
It can be adjusted under pressure (up to 1,5 mm) by turning the tray 180° and, turning also the plate, it is possible to reach 2,9 mm of total adjustment.

Selection and Application

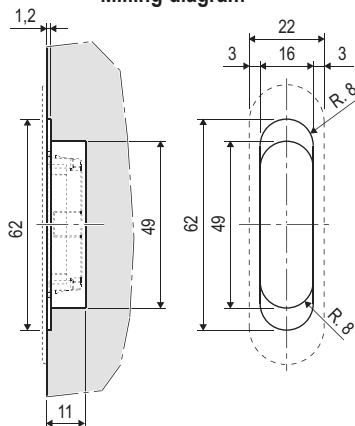
To be coupled with Polaris 2XT, Revolution XT and Vitra, on rebated doors; the application is possible on flush doors, only coupled with Polaris 2XT, Revolution XT and Vitra.

Fastening

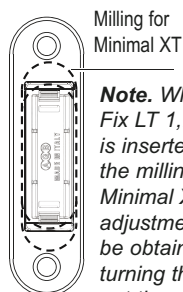
Use two screws 3,5x20 mm.



Milling diagram

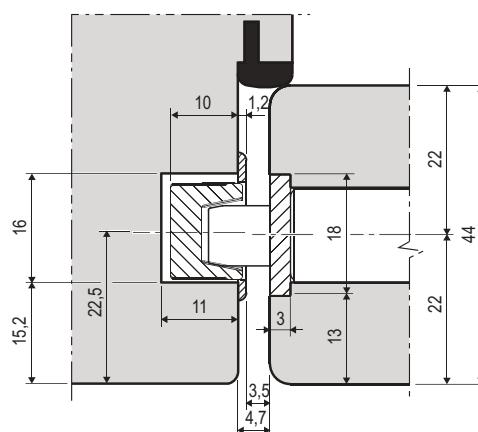


Easy-Fix LT 1,2 mm can be inserted into the milling of the Minimal XT striker

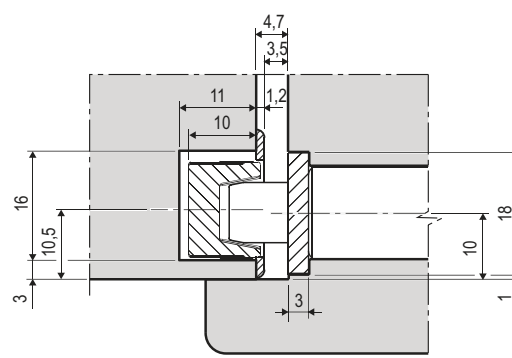


Note. When Easy-Fix LT 1,2 mm is inserted into the milling of the Minimal XT, the adjustment can be obtained just turning the tray, not the plate.

Example of flush application with Polaris 2XT



Example of rebated application with Polaris 2XT



Note. It is possible to remove the Easy-Fix LT cover-tray without removing the screws (AGB PATENT).

Order Specifications

Ref.	Article	Material	Description
①	B01402.96.XX	steel	striker only plate
②	B02402.37.XX	plastic	Easy-Fix LT magnetic cover-tray for Polaris 2XT, Revolution XT and Vitra

Note. Refer to the price list in force to check the availability of the finishes.